



What's a Moose Plate?

Since 2001, the purchase of Moose License Plates has created more than \$14.6 million in revenue, supporting conservation and heritage projects in every county in New Hampshire.

Did You Know?

The NH Conservation and Heritage License Plate Program began in 1993 when a group of 4th grade students in Holderness presented the idea to the NH State Legislature.

Learn more

We're on Facebook, Twitter and www.MoosePlate.com

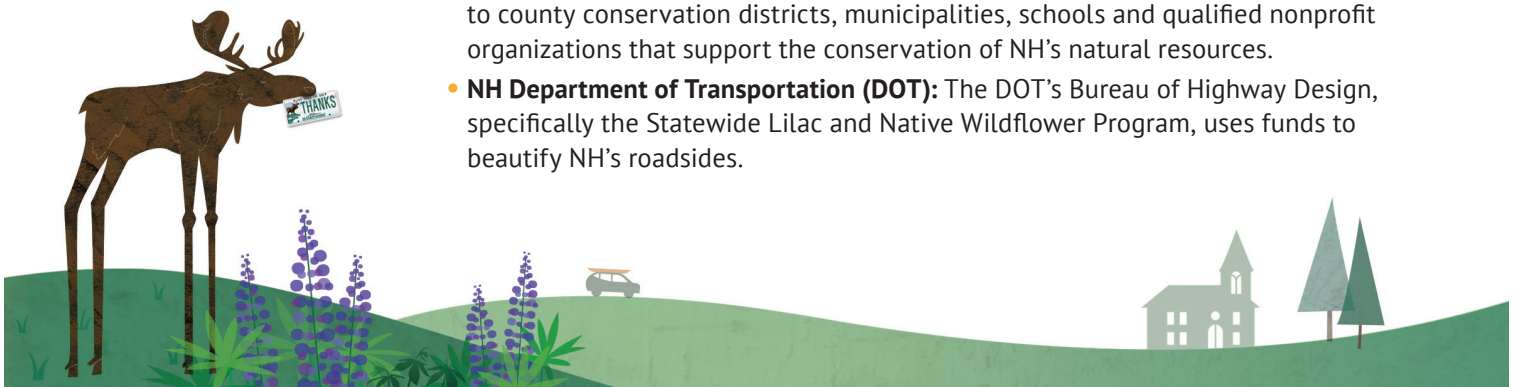
A Moose Plate is a special license plate benefiting New Hampshire conservation and heritage. Moose Plates are purchased, for a fee, at your city or town clerk's office when you register or renew your vehicle.

Benefits of Buying a Moose Plate

The NH Conservation and Heritage License Plate (Moose Plate) Program supports the protection of scenic lands, historic sites and artifacts, plants and wildlife in New Hampshire. Revenues are distributed to designated state agencies for the purpose of conserving publicly owned historic properties, works of art, artifacts and archaeological sites; researching and managing nongame wildlife species, their habitat, native plant species, exemplary natural communities and educating the public about these species; providing grants to counties, municipalities and non-profits for resource conservation projects; expanding roadside wildflower and lilac plantings; and administering the Land and Community Heritage Investment Program (LCHIP).

Recipient Agencies

- **NH Department of Cultural Resources (DCR):** Through the Division of Historical Resources, the State Council on the Arts and the State Library, the DCR funds grant projects for the restoration, preservation and/or conservation of publicly owned items significant to New Hampshire's cultural heritage.
- **NH Fish and Game Department:** Moose Plate funds benefit NH Fish and Game's Nongame and Endangered Wildlife Program in its work to protect and restore threatened and endangered wildlife and their habitats.
- **NH Department of Resources and Economic Development (DRED):** Through the Natural Heritage Bureau, DRED funds projects that research and manage native plants and natural communities. Through the Historic Sites Bureau, DRED helps fund the care, maintenance and administration of historic sites and resources.
- **NH Land and Community Heritage Investment Program (LCHIP):** Funds from the Moose Plate program support LCHIP's administrative costs, including staffing and office expenses. LCHIP provides matching grants (from a different source) to help municipalities and nonprofits protect the state's most important natural, historical and cultural resources.
- **NH State Conservation Committee (SCC):** The SCC awards Moose Plate grants to county conservation districts, municipalities, schools and qualified nonprofit organizations that support the conservation of NH's natural resources.
- **NH Department of Transportation (DOT):** The DOT's Bureau of Highway Design, specifically the Statewide Lilac and Native Wildflower Program, uses funds to beautify NH's roadsides.



Conservation and Heritage License Plate (Moose Plate) revenues are divided as follows, as determined by New Hampshire legislation (RSA 261:97-b).

Up to \$50,000 annually shall be distributed to the Department of Transportation for the expanded wildflower establishment program.

\$1 from every plate sold, up to \$50,000 annually, shall be placed in an account for use by the Department of Resources and Economic Development to promote the Moose Plate program.

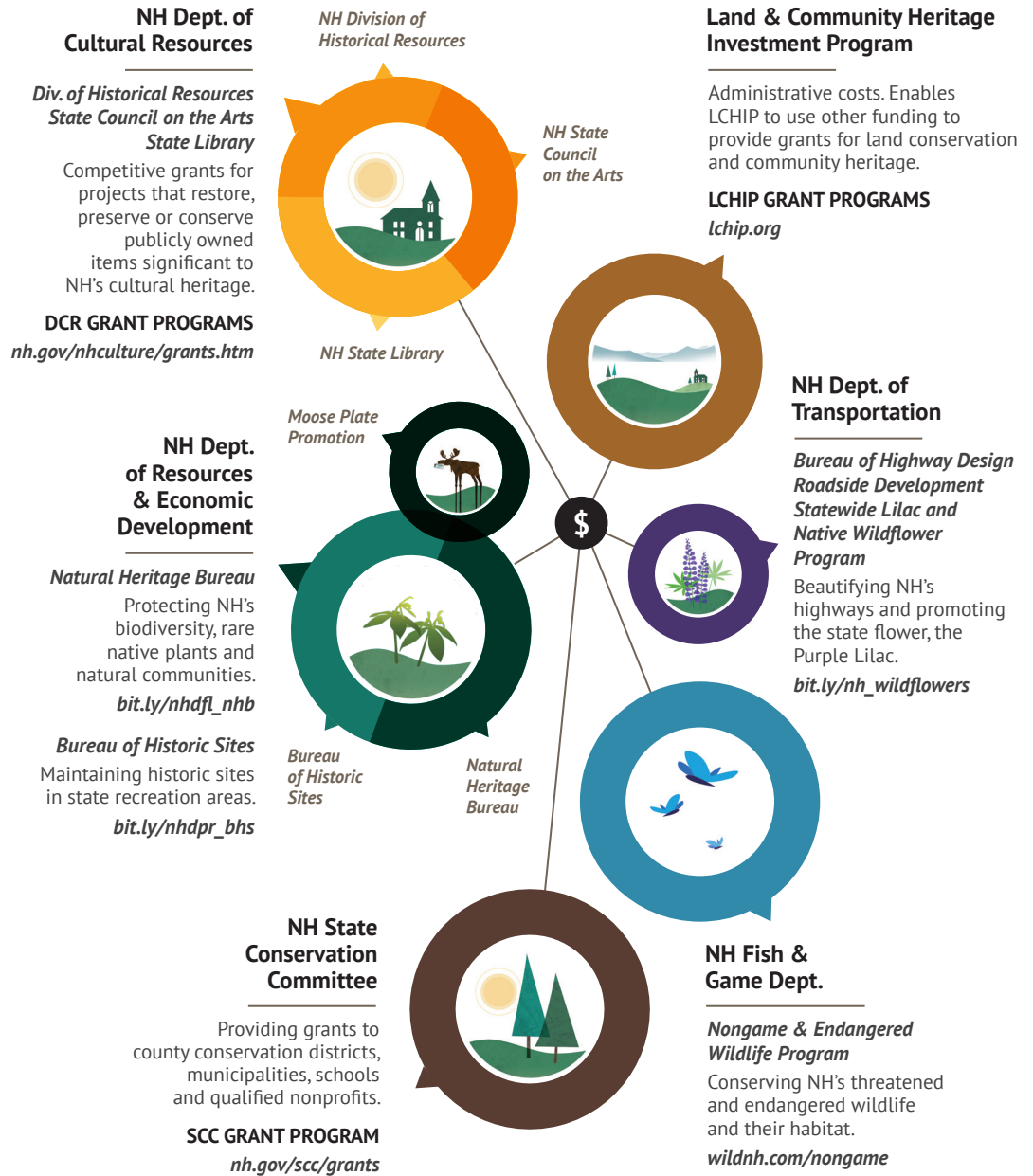
The remainder shall be distributed equally among the Department of Cultural Resources, the Department of Fish and Game, the Department of Resources and Economic Development, the State Conservation Committee and the New Hampshire Land and Community Heritage Investment Authority (LCHIP). The total amount to LCHIP shall not exceed \$200,000 per fiscal year.

Learn more

We're on Facebook, Twitter and www.MoosePlate.com

Where the Money Goes

Funds raised by the NH Conservation and Heritage License Plate Program goes back into our communities through the following agencies. To learn more about grants, see the information below.



NOTE:
 Diagram circle sizes indicate relative funding.

